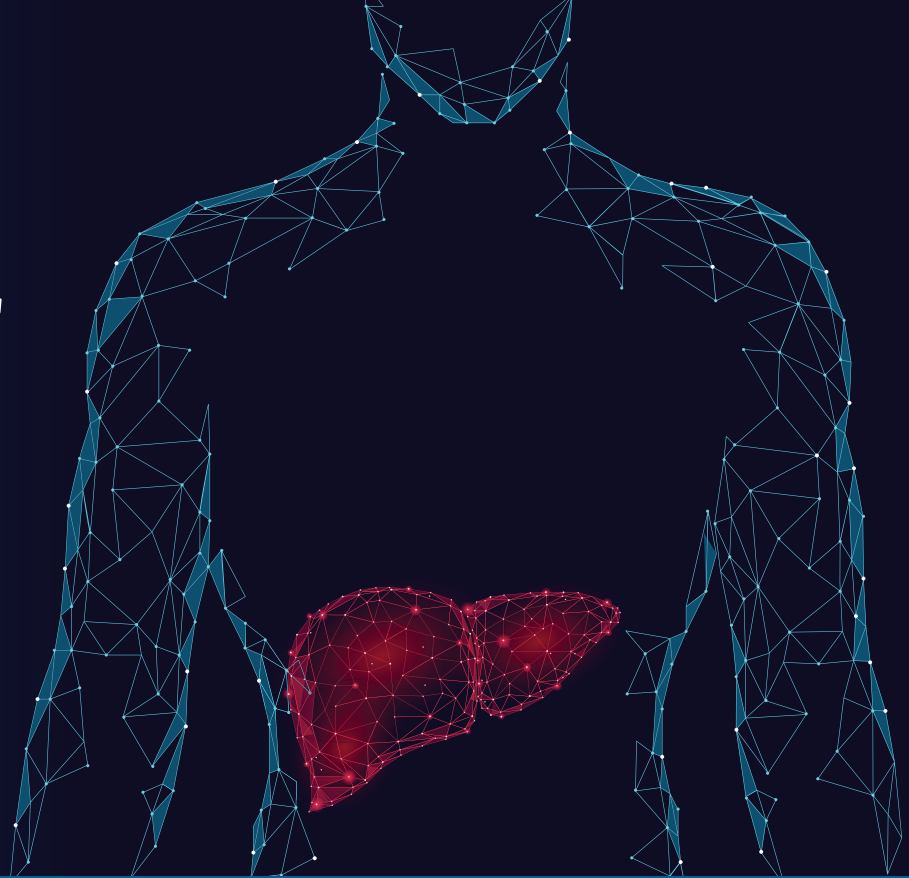


# Fatty Liver or **NASH?**



## Clinical research study enrolling soon.

Medpace is seeking adults diagnosed with fatty liver (also called NASH) to potentially participate in an upcoming clinical research study of an investigational medication.

### Key study requirements\* include:

- Having a diagnosis of fatty liver or NASH (nonalcoholic steatohepatitis),  
Note: Diagnosis documentation required
- Being overweight but not obese,
- Not having cancer or other significant illnesses, and
- Being able to pass a drug screen.

\*Other criteria will apply.

All Medpace research studies are voluntary and compensated.

**M E D P A C E**  
Get Paid to Change the Pace of Medicine

Call 513-366-3222 or visit  
[Medpace.com](https://www.Medpace.com) to learn more.