

A DEEPER DIVE INTO HEMATOLOGY AND ONCOLOGY

AN INTEGRATED ADVANTAGE

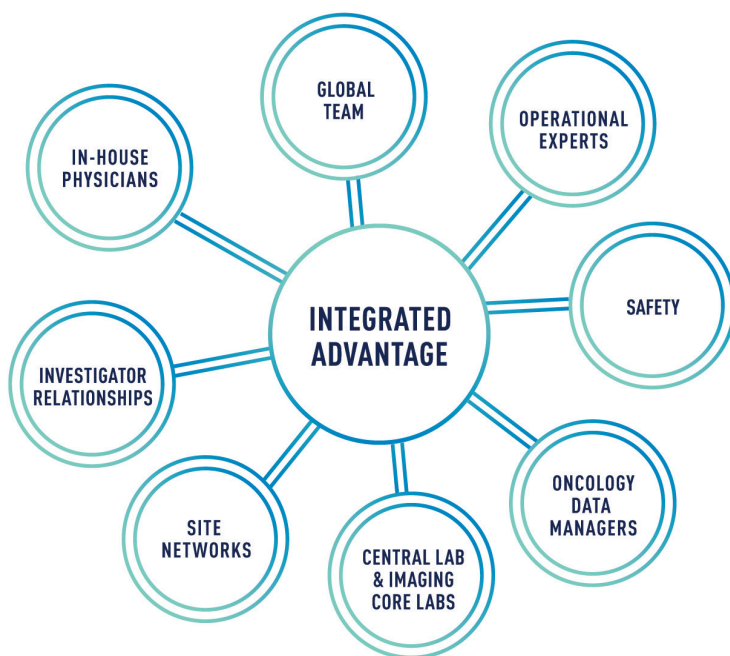
With our proven full-service outsourcing model, Medpace delivers high-quality results. In the competitive field of hematology and oncology, we have earned a reputation for taking on some of the most complex and challenging cancer research studies.

- Led by medical, operational, and regulatory experts experienced in hematology and oncology
- Integrated experts from Medpace business units including tumor imaging and central laboratory
- Deep hematology and oncology experience having managed Phase I-IV trials around the globe
- Preferred provider relationships with key sites expedites site start-up, enhances recruitment and maximizes trial efficiency
- Skilled in drug, device, and combination products

Medpace supports Sponsors who are advancing new anti-cancer therapies by providing specialized expertise in the design and management of clinical research. Our Sponsors gain a competitive edge with our integrated full-service approach in the ever-evolving landscape of drug and biologic clinical development.

EXPERT INSIGHT

Our highly experienced medical, regulatory, and operational experts work collaboratively to execute clinical trials. We understand issues from the perspective of Sponsors, clinical investigators, scientific leaders, and the reviewers at regulatory agencies. With this insight, we can successfully define and execute clear development plans for drug, device and combination products from beginning to end.



Medpace has the medical expertise, global experience, central labs, imaging labs and site relationships to complete successful studies for Sponsors.



EXPERIENCE

The Medpace hematology/oncology team has extensive clinical and research experience across a full range of solid tumor and hematologic indications and therapies from classic multi-cytotoxic agents to cutting-edge and targeted therapies. We have managed small, focused trials as well as large global studies.

Solid Tumor including:

- Brain
- Breast
- Gastrointestinal including colorectal and non-colorectal
- Genitourinary including prostate, renal and bladder cancers
- Gynecologic
- Head and neck
- Lung
- Skin including melanoma

Malignant hematology including:

- Leukemia
- Lymphoma
- Myeloma Non-malignant hematology

Specialty area include:

- Pediatric hematology/oncology
- Pediatric and adult hematopoietic stem cell transplantation
- Women's health and malignancies
- Regenerative medicine and cellular therapies
- Immunotherapies
- Gene therapies
- Precision medicine
- Adaptive study design
- Rare disease and orphan indications
- Medical device and combination products
- Diagnostics



With our unique approach to clinical research, we have earned a reputation for taking on some of the most complex and challenging cancer research studies.



SCIENTIFIC-DRIVEN DEVELOPMENT

Medpace is unique in its scientifically-driven approach to clinical research. The Medpace model gives Sponsors the advantage of early and ongoing insight and guidance from therapeutic experts throughout the trial design and execution. Our highly experienced medical doctors provide strategic direction for study design and planning, train operational staff, work with Investigators, provide medical monitoring, and meet with regulatory agencies. They are embedded throughout your studies, providing greater depth and the ability to tackle complex and challenging diseases.

In-House Physicians



Cesar Casimiro, MD
Senior Medical Director



Paulina Cox, DO
Medical Director



Gaston Demonty, MD
Senior Medical Director



Mariko DeWire-Schottmiller, MD
Senior Medical Director



Jamal Gasmí, MD, PhD
Senior Medical Director



Lyon Gleich, MD, FACS
Senior Vice President,
Medical Department



Jess N. Guarnaschelli, MD
Senior Medical Director



Gregory Hale, MD, FAAP
Senior Medical Director



Glynis Neagle, MD
Vice President,
Medical Department



Agnes Slater, MBBS, PhD
Senior Medical Director



Franklin O. Smith, III, MD, FAAP, FACP
Senior Vice President,
Medical Department



Blythe Thomson, MD
Senior Vice President,
Medical Department



Ann Woolfrey, MD
Vice-President,
Medical Department

ADVANCED CLINICAL PRACTITIONERS ADD A PATIENT'S PERSPECTIVE

Our medical directors are supported by a team of experienced ACPs whose unique perspective brings added value to the clinical development team. These highly-trained experts with advanced degrees and hands-on clinical experience provide an additional layer of knowledge and insights that can streamline your studies and address potential challenges early in the study planning. ACPs are embedded in the teams to ensure your study is feasible and operationalized for efficient execution by looking at the protocol through the lens of the patient and site staff. ACPs also help with the review of safety events, ongoing team education, recruitment strategies, and study document review. Their understanding of what works in a clinical setting makes them a valuable part of our embedded medical expertise model.



Laura Clark, MSN, APRN, FNP-BC
Advanced Clinical Practitioner



Jean Denny, MSN, APRN, ACNP-BC
Advanced Clinical Practitioner



Lauren Holton, MSN, APRN, FNP-BC
Advanced Clinical Practitioner



Kimberly Lee, MSN, ANP-BC, ACHPN, AOCNP
Advanced Clinical Practitioner



Shokri Othman, MSc, BSN, RN
Advanced Clinical Practitioner



Cesar Casimiro, MD

Senior Medical Director

Dr. Casimiro is a board certified medical oncologist bringing more than 20 years of professional medical experience in clinical trials to the Medpace team.

Experience Summary

- 20+ years of global experience in managing the design, supervision, and development of clinical trials across all phases
- Managed oncology development programs for numerous drug indications
- Medical Director in Clinical Research at global CROs and big pharma companies.
- Member of the Spanish Society on Medical Oncology (Sociedad Española de Oncología Médica (SEOM))
- Key opinion leader and extensively published in the peer-reviewed medical and scientific literature

Education Summary

- Medical Degree, Faculty of Medicine at the Complutense University of Madrid
- Specialist in Medical Oncology, Conception Clinic, Jimenez Diaz Foundation, Autonomous University of Madrid
- Master in AIDS, Carlos III Health Institute, Complutense University of Madrid
- Master in Clinical Nutrition, Autonomous University of Madrid
- Post Grad Diploma in Medical Oncology University of Girona /Spanish Society of Medical Oncology
- Residency in Medical Oncology, Conception Clinic, Jimenez Diaz Foundation

Paulina Cox, DO

Medical Director

Dr. Paulina Cox is a doctor of osteopathic medicine bringing more than 10 years of experience in clinical research and clinical hematology/oncology practice to the Medpace team.

Experience Summary

- Experienced in the medical management of patients with hematologic malignancies, solid tumors, and histiocytic disorders, including hematopoietic cell transplantation
- Previous experience as a safety physician with a focus on safety surveillance in hematology/oncology clinical trials, including Phase I (FIH), II, III, and postmarketing
- Active member in multiple oncologic societies, including ASCO, ASTCT, ASPHO, Histiocyte Society

Education Summary

- Doctor of Osteopathic Medicine, Lake Erie College of Osteopathic Medicine
- Bachelor of Science, Canisius College
- Residency in Pediatrics, Women & Children's Hospital of Buffalo (now Oishei Children's Hospital)
- Fellowship in Pediatric Hematology/Oncology, Women & Children's Hospital of Buffalo (now Oishei Children's Hospital) and Roswell Park Cancer Institute



Gaston Demonty, MD

Senior Medical Director

Dr. Gaston Demonty is board-certified oncologist bringing over 18 years clinical trial and drug development experience in both academia and industry.

Experience Summary

- Over 13 years of experience in the biopharmaceutical industry, holding positions of increasing responsibility in both Research & Development and Medical Affairs
- Designed and managed protocols, participated in discussions and interactions with Health Authorities, and chaired scientific advisory boards
- Collaborated on submissions to European authorities for indication approvals as well as submissions to national authorities on reimbursement dossiers
- Developed and delivered disease state and drug specific medical education programs and materials in the pre and post-launch setting
- Developed and lead Evidence Generation Programs in the post marketing setting

Education Summary

- Doctor of Medicine, Universidad de Buenos Aires – Buenos Aires, Argentina
- Residency in Internal Medicine, Clinica Bazterrica – Buenos Aires, Argentina
- Fellowship, Medical Oncology, Instituto Oncologico Henry Moore; Universidad del Salvador – Buenos Aires, Argentina
- Fellowship, Clinical Research in Breast Cancer, Jules Bordet Institute – Brussels, Belgium

Mariko DeWire-Schottmiller, MD

Senior Medical Director

Dr. Mariko DeWire-Schottmiller is a board-certified pediatric hematologist/oncologist with 15 years of experience in clinical research, academia, and clinical oncology practice in Oncology and Neuro-oncology.

Experience Summary

- Over 15 years of experience in medical management of patients with malignancies including brain tumors
- Previously, Associate Professor, at University of Cincinnati, College of Medicine, Cancer and Blood Diseases Institute, Cincinnati Children's Hospital Medical Center
- Investigator experience in trials involving neuro-oncology, malignant brain tumors, pediatric brain tumors, and solid tumors
- Leadership roles in The International DIPG/DMG Registry, Pediatric Brain Tumor Consortium, and Children's Oncology Group
- Active member of ASCO, SNO, AACR, and ASPHO
- Well published in peer-reviewed medical and scientific literature
- Peer reviewer for multiple oncology journals

Education Summary

- M.D., Boonshoft School of Medicine at Wright State University
- Residency in Pediatrics, University of Tennessee College of Medicine
- Fellowship, Pediatric Hematology/Oncology, University of Tennessee College of Medicine and St. Jude Children's Research Hospital
- Neuro-Oncology training, Department of Oncology, Neuro-Oncology Division, St. Jude Children's Research Hospital



Jamal Gasmi, MD, PhD

Senior Medical Director

Dr. Jamal Gasmi is board certified in hematology and oncology, immunology, and internal medicine. He brings over 20 years' experience in drug development in academia, biopharma and Clinical Research Organizations.

Experience Summary

- Extensive expertise in producing and implementing strategic clinical development plans
- Directed oncology development programs that led to approval of various anti-cancer agents
- Vice President and global leader for hematology and oncology at a global CRO
- Held global medical leadership positions at numerous biopharmaceutical companies including Chief Medical Officer and Head of Regulatory Affairs
- Deputy Head and Investigator at hematology and oncology academic centers

Education Summary

- Doctor of Medicine, Oncology, University Rene Descartes, Paris V
- European Board of Medical Oncology, London
- Doctor of Philosophy, Immunology, University Pierre et Marie Curie, Paris VI
- Master of Pharmacology, University Lariboisiere, Paris
- Master of Statistics and Trial Design, University Paris IX

Lyon Gleich, FACS

Senior Vice President, Medical Department

Dr. Lyon Gleich is board certified in otolaryngology and has provided medical leadership over Medpace's oncology division for more than 12 years.

Experience Summary

- Extensive expertise in new drug development, biologic therapy development, gene therapy development, and multi-cytotoxic agent studies
- Previously: Professor, Department of Otolaryngology at the University of Cincinnati; Associate Professor, Department of Otolaryngology – Head and Neck Surgery; Director of Resident Research, Department of Otolaryngology
- Active ASCO and ASH member
- Key opinion leader with numerous publications in the field of hematology and oncology

Education Summary

- Doctor of Medicine, Summa Cum Laude, State University of New York, Health Science Center, College of Medicine
- Fellowship, Oncology, University of Cincinnati
- Bachelor of Arts, Summa Cum Laude, Brooklyn College



Jess N. Guarnaschelli, MD

Senior Medical Director

Dr. Guarnaschelli is board-certified in radiation oncology and brings more than 15 years of experience in clinical research, academia, and clinical oncology practice to the Medpace team.

Experience Summary

- Well-versed in the design and conduct of clinical trials having worked with many devices and drug indications
- Extensive involvement in trials of women's oncologic disease including breast, endometrial, cervical, and ovarian carcinoma
- Clinical background includes chemotherapeutics, immuno-oncology, and solid tumors
- Awarded 40 under 40 award for young leaders and innovators
- Awarded Top Doctor award
- Active member in multiple oncologic societies revolving around radiation oncology and medical oncology including ASCO, SITC, and the ASTRO
- Well-published in the peer-reviewed medical and scientific literature
- Peer reviewer for multiple oncology journals
- Exam writer for American Board of Radiology, Radiation Oncology

Education Summary

- Doctor of Medicine, University of Louisville School of Medicine - Louisville, KY
- Bachelor of Arts, Biological Sciences, Brown University - Providence, RI
- Internship, General Surgery, Indiana University, Indianapolis, IN
- Residency, Radiation Oncology, University of Louisville School of Medicine - Louisville, KY
- Chief Resident, Radiation Oncology, University of Louisville School of Medicine - Louisville, KY

Gregory Hale, MD, FAAP

Senior Medical Director

Dr. Gregory Hale is a board-certified pediatric hematologist- oncologist with over 24 years of clinical trial experience in bone marrow transplantation, cellular and gene therapies, and hematologic malignancies.

Experience Summary

- Held a variety of director level roles at nationally recognized academic institutions where he served as a principal investigator or co-investigator for pilot, phase 1, phase 2, and phase 3 clinical trials
- Investigator experience in trials involving benign hematology, vaccines, immunotherapy, chemotherapy, cellular and gene therapies, hematopoietic cell transplantation in pediatrics, adolescents and adults
- Leadership roles in Center for International Blood and Marrow Transplant Research (CIBMTR), National Marrow Donor Program (NMDP), Foundation for the Accreditation of Cellular Therapy (FACT), and American Academy of Pediatrics (AAP)
- Thought leader with more than 200 peer-reviewed manuscripts, book chapters, and review articles
- Previously Professor of Oncology and Pediatrics at Johns Hopkins University School of Medicine and Medical Director, Pediatric Hematology Oncology, Johns Hopkins All Children's Hospital
- Previously Clinical Director, Division of Blood and Marrow Transplantation, and Medical Director, Transplant and Gene Therapy Clinical Research Office, St. Jude Children's Research Hospital
- Board certified in General Pediatrics and Pediatric Hematology/Oncology
- Active member of ASH, ASCO, ASBMT, AAP, ISCT, ASGCT, ACRP, DIA

Education Summary

- Doctor of Medicine, Summa Cum Laude, Joan C. Edwards School of Medicine at Marshall University
- Residency in Pediatrics, Children's Hospital of Pittsburgh of UPMC
- Fellowship, Pediatric Hematology/Oncology, St. Jude Children's Research Hospital



Glynis Neagle, MD

Vice President, Medical Department

Dr. Glynis Neagle is an oncology specialist who brings more than 20 years of clinical trial and drug development experience to the Medpace medical team.

Experience Summary

- Held senior level positions including Chief Medical Officer in medical affairs and clinical drug development for both pharmaceutical companies and Clinical Research Organizations
- Experience includes NCEs, Vaccines, Biological and Immunological therapeutics and ranges from small single center Phase 1 studies to multi-center Phase II and pivotal phase III global trials
- Drug development experience in oncology, metabolic/endocrine and immunology
- Extensively participated in a variety of scientific advisory boards, chaired international meetings, and provided crucial expert opinion on global drug development strategy
- European QPPV providing oversight of European Pharmacovigilance regulatory requirements
- Affiliated with the Royal Society of Medicine and Faculty of Pharmaceutical Medicine
- Member of ASMO and ESMO

Education Summary

- Bachelor of Science, Biochemistry and Immunology, University of Glasgow
- Doctor of Medicine, University of Glasgow
- GMC registered with a license to practice medicine

Agnes Slater, MBBS, PhD

Senior Medical Director

Dr. Slater is a clinical research physician specialized in oncology and brings over 20 years' of drug development experience in healthcare, academia and pharmaceutical industry.

Experience Summary

- Clinical research expertise in solid tumors and adult hematologic malignancies; surgical oncology; biosimilars and innovative adaptive trial designs
- Contributor to product approval in oncology, metabolic disease and seizure disorders
- Medical oversight of phase I (FIH), II, III and IV global studies for various medical indications
- Extensive experience in medical monitoring and safety surveillance through the Asia-Pacific Region
- Member of ASCO, ESMO and SSO

Education Summary

- Bachelor of Arts, Chinese Studies – Eötvös Loránd University, Budapest, Hungary
- Bachelor of Medicine, Bachelor of Surgery - Peking Medical University, Beijing, China
- Doctor of Philosophy, Pharmacology - National University of Singapore, Singapore
- Postdoctoral Fellowship in Surgery - National University Hospital, Singapore



Franklin O. Smith, III, MD, FAAP, FACP

Senior Vice President, Medical Department

Dr. Frank Smith is a clinical hematologist/oncologist with over 30 years of experience as a Principal Investigator on clinical trials.

Experience Summary

- Over three decades of academic clinical practice in pediatric hematology /oncology and adult hematopoietic stem cell transplantation
- Principal Investigator or co-investigator on numerous Phase I, II, and III clinical and translational research studies in acute myeloid leukemia, fanconi anemia, cord blood transplantation and gene therapy
- More than 170 peer-reviewed scientific manuscripts, reviews, chapters and books
- Professor of Medicine and Pediatrics, University of Cincinnati College of Medicine
- Previously: Clinical Director, University of Cincinnati Cancer Institute; Director, Division of Hematology/Oncology, Cincinnati Children's Hospital Medical Center; Vice-Chair, Children's Oncology group

Education Summary

- Doctor of Medicine, University of South Carolina School of Medicine
- Residency in Pediatrics, University of Florida College of Medicine
- Fellowship, Pediatric Hematology/Oncology, University of Washington and the Fred Hutchinson Cancer Research Center

Blythe Thomson, MD

Senior Vice President, Medical Department

Dr. Blythe Thomson is board certified in pediatric hematology and oncology and brings nearly 25 years of clinical trial and drug development experience to the Medpace team.

Experience Summary

- Over 20 years of experience in medical management of patients with hematologic malignancies and solid tumors including hematopoietic cell transplant
- Experienced managing outpatient and inpatient oncology centers, apheresis units, as well as clinical and translational research units
- Drug development experience in all phases of clinical development for solid tumors and hematologic malignancies
- Well versed in global regulatory submissions and pediatric investigational plans
- Key opinion leader in pediatric leukemia with published manuscripts

Education Summary

- Doctor of Medicine, The Ohio State University
- Residency in Pediatrics, The Ohio State University
- Fellowship, Pediatric Hematology/Oncology, Fred Hutchinson Cancer Research Center
- Certificate Program, Healthcare Administration, University of Washington



Ann Woolfrey, MD

Vice President, Medical Department

Dr. Ann Woolfrey is a board-certified pediatric hematologist-oncologist. She brings 24 years' experience in pediatric hematology, stem cell, and research from entities such as academia, clinical research, and hospitals.

Experience Summary

- Held a director level role at a nationally recognized academic institution and cancer research center
- Faculty member at a leading cancer research center and at a recognized academic institution for over 20 years, rising to Full Member and Professor ranks, respectively
- Active member in four professional affiliations revolving around pediatrics, hematology, bone marrow transplant, and histocompatibility and immunogenetics
- Board Certified in internal medicine as well as pediatric hematology and oncology
- Key opinion leader with over >150 publications and presentations in the fields of hematology, oncology, and pediatrics
- Experience in clinical research for 22 years

Education Summary

- Bachelor of Arts in Chemistry, Saint Olaf College
- Doctor of Medicine, University of Minnesota
- Residency in Pediatrics and Internal Medicine, University of Chicago Hospitals and Clinics
- Fellowship, Pediatric Hematology/Oncology, Children's Hospital and Medical Center/Fred Hutchinson Cancer Research Center

Laura Clark, MSN, APRN, FNP-BC

Advanced Clinical Practitioner, Hematology & Oncology

Laura Clark is an advanced clinical practitioner specialized in the medical management, health promotion, and health maintenance of adults with hematologic and oncologic diseases.

Experience Summary

- Specialized in the medical management, health promotion and health maintenance of children, adolescents, and young adult patients with leukemia/lymphoma, immunodeficiency, and bone marrow failure patients pre- and post-HCT in the outpatient and day hospital setting
- Served on the quality review council in the Cancer and Blood Diseases Institute
- Provided education to the patients and families regarding disease process, treatment, medications, and related side effects and outcomes
- Specialized in the medical management of children, adolescents, and young adult patients pre- and post-operatively in the hospital
- Provided care for routine and acute visits, blood transfusions, infusion therapy, bone marrow procedures, and chemotherapy treatments
- Performed bone marrow biopsies and aspirates on adult patients in the outpatient setting
- Provided direct oversight of the hematology/oncology patients receiving chemotherapy treatments, transfusions, and infusions

Education Summary

- Master of Science in Nursing, Georgia College and State University
- Bachelor of Science in Nursing, Old Dominion University



Jean Denny, MSN, APRN, ACNP-BC

Advanced Clinical Practitioner, Hematology & Oncology

Jean Denny is a board-certified nurse practitioner with 14 years clinical and research experience in malignant and non-malignant hematology; oncology including solid tumor and gynecologic oncology; and hematopoietic cell transplant, with expertise in apheresis/leukapheresis.

Experience Summary

- Specialized in the medical and surgical management of gynecologic cancers, including the management of chemotherapy side effects and post- surgical complications
- Developed and built a gynecologic oncology practice at a regional cancer center in conjunction with medical leadership
- Study coordinator for gynecologic oncology cooperative group clinical trials for regional cancer center
- Directed clinical development of nurse practitioner role in urban hematology/ oncology practice including development of a nurse practitioner-led coagulation clinic.
- Managed the medical care of patients hospitalized for hematopoietic transplant, including medical management of chemotherapy and radiation conditioning therapies and associated complications including transplant complications
- Developed and implemented neutropenic risk assessment for prescribing G-CSF products in medical oncology practice

Education Summary

- Master of Science in Nursing, University of Cincinnati
- Bachelor of Science in Nursing, University of Cincinnati
- Associate Degree in Nursing, University of Evansville

Lauren Holton, MSN, APRN, FNP-BC

Advanced Clinical Practitioner, Hematology & Oncology

Lauren Holton is a board-certified family nurse practitioner with over 8 years of clinical experience including inpatient and outpatient hematology/ oncology, hematopoietic cell transplant and hospice and palliative medicine, with a focus in oncologic and hematologic malignancies.

Experience Summary

- Specialized in the medical and symptom management, health promotion and maintenance of children, adolescents and adults with advanced disease processes, including solid tumors and hematologic malignancies
- Developed and employed holistic, advanced palliative care programs including clinic-based oncology and general palliation in inpatient and extended care facilities
- Served as a reference and resource for staff for regulatory compliance and standards of care
- Created and implemented education and training programs for hospice and palliative medicine staff including community physicians, students, nurses, nurse practitioners, and support staff
- Provided community education and seminars on advanced and terminal illnesses

Education Summary

- Master of Science in Nursing, Malone University
- Bachelor of Science in Nursing, The Ohio State University



Kimberly Lee, MSN, ANP-BC, ACHPN, AOCNP

Advanced Clinical Practitioner, Hematology & Oncology

Ms. Lee is a board-certified nurse practitioner with advanced oncology certification bringing over 17 years of clinical experience including inpatient and outpatient hematology/oncology and hospice and palliative care to the Medpace team.

Experience Summary

- Specialized in the medical management, health promotion, and maintenance of adult hematology/oncology patients
- Experienced in coordinating and managing complex inpatient and outpatient care plans for hematology/oncology and hospice care
- Led a team of registered nurses, social workers, occupational therapists, respiratory therapists, and chaplains to provide high quality hospice care
- Provided education to staff, patients, and families on disease process, treatment plans, and end of life care
- Conducted research in medical research laboratories with knowledge on hematology cancer genetics and molecular biology

Education Summary

- Master of Science in Nursing, The Ohio State University – Columbus, Ohio
- Bachelor of Arts in Zoology, Miami University – Oxford, Ohio

Shokri Othman, MSc, BSN, RN

Advanced Clinical Practitioner, Hematology & Oncology

Shokri Othman is a registered specialist nurse in the UK, working as an Advanced Clinical Practitioner, with experience in oncology, hematology, cardiology, endocrinology and neurology clinical research.

Experience Summary

- More than 15 years of clinical research experience of all phases and across several disciplines
- Operational clinical leadership within one of the leading UK Clinical Research Facilities, covering early-phase research in all medical specialties
- Extensive experience in management and leadership of healthcare projects, teams, units, and services
- Set up and initiated the first Cardiovascular Centre in Bethlehem- Palestine
- Course organizer for Masters in Research course (MRes) in Clinical Research Design and Management- Imperial College London

Education Summary

- PhD in Clinical Medicine Research, Imperial College London (pending)
- Master of Science in Advanced Cancer Nursing, Middlesex University, London
- Bachelor of Science in Nursing, Jordan University of Science and Technology



DRIVING EFFICIENT AND CONSISTENT DATA FOR GLOBAL STUDIES

Achieve quality results, meet deadlines, and maximize efficiencies by partnering with a CRO that excels in execution. Medpace demonstrates a commitment to quality and a dedication to conducting full-service studies in an exacting manner to produce the highest quality results.

KEYS TO SUCCESSFUL EXECUTION

- **Committed Teams:** With turnover rates that are lower than the industry standard, our team is with you from project initiation to completion. As a result, we typically develop better team dynamics based on trust and respect
- **Resourcefulness:** Medpace promotes a culture of problem-solving. Our global operational staff proactively identify potential issues and communicate solutions, ensuring your sites and studies are managed effectively and efficiently
- **Site and KOL relationships:** Due to Medpace's hematology and oncology experience and relationships with Investigators and opinion leaders worldwide, we can select the best sites for your specific program. This provides an advantage in meeting your recruitment timelines with high quality data. Medpace has received multiple awards recognizing Medpace as a leading global CRO, particularly noting the excellence and training of our CRAs
- **Regulatory Support:** Medpace offers a dedicated global regulatory submissions team as well as global regulatory affairs for comprehensive support



Hematology/Oncology Lab Support:

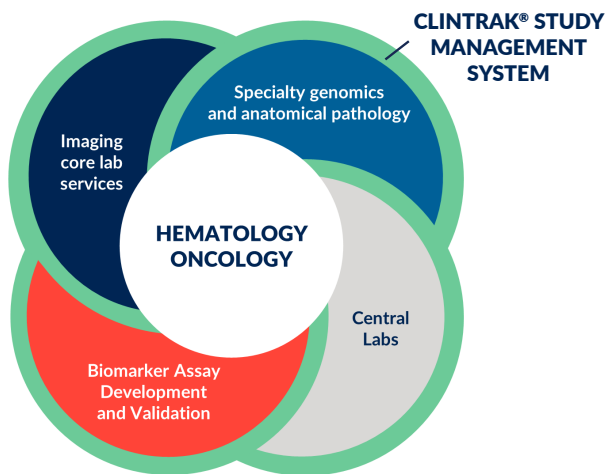
Medpace offers comprehensive and fully-integrated laboratory services including global central labs and an imaging core lab. The built-in collaboration and efficiencies of working with a single vendor facilitates a streamlined strategy for executing complex global studies.

Central Lab

- PK/PD analysis
- Biomarker development
- Flow Cytometry
- Specialty genomics and anatomical pathology

Imaging Core Lab

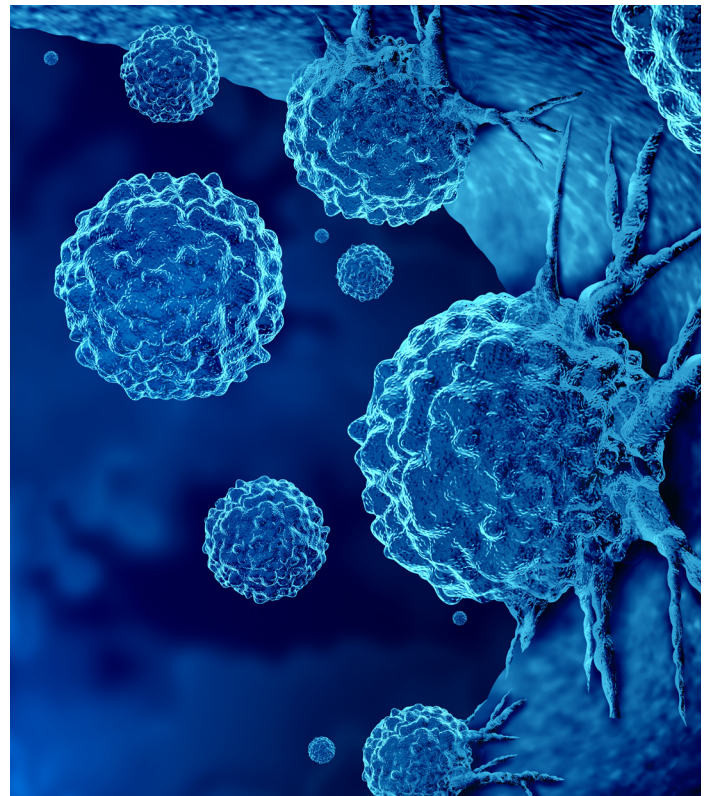
- Modalities
- Response Criteria including Sample Specialties



ClinTrak® STUDY MANAGEMENT TECHNOLOGY

Medpace offers an innovative suite of proprietary, leading edge technology with ClinTrak® Clinical Suite. The ClinTrak Lab component is a full-scale Laboratory Information Management System (LIMS) that provides access to: daily lab reports, management information, cumulative results and trend graphing, secure role-based access, and study specific project management pages.

The ClinTrak Imaging component integrates image tracking, quantitative and qualitative analysis, and data management to store and manage data from all imaging and reading centers. Integrated clinical trial services deliver efficient and streamlined execution.



FULL-SERVICE CLINICAL DEVELOPMENT

Medpace is a scientifically-driven, global, full-service clinical contract research organization providing Phase I-IV clinical development services to the biotechnology, pharmaceutical and medical device industries. Medpace's mission is to accelerate the global development of safe and effective medical therapeutics through its high-science and disciplined operating approach that leverages local regulatory and deep therapeutic expertise across all major areas including oncology, cardiology, metabolic disease, endocrinology, central nervous system and anti-viral and anti-infective.

