

MEDPACE

BIOANALYTICAL LABORATORIES

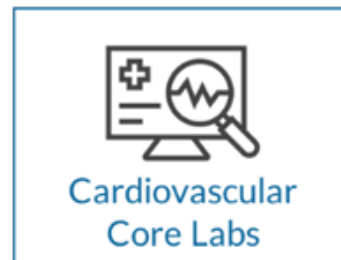
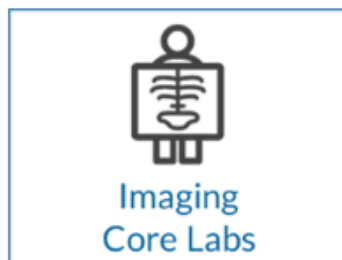
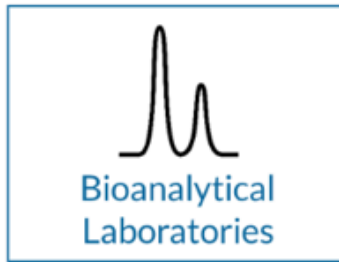
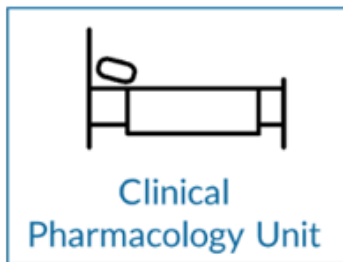
Experts. Experience. Execution.

Discover the POWER OF X™



An Integrated Approach to Global Clinical Research

Integrating core clinical trial services delivers efficient and streamlined execution and higher quality results. Through its wholly-owned subsidiaries, Medpace offers clinical pharmacology, as well as supporting laboratory services including central laboratory, bioanalytical, ECG core lab, and imaging core labs.



The Medpace Advantage

Early Phase drug discovery demands not only therapeutic expertise in program development, but a group of full-service partners to deliver exceptional laboratory services quickly and efficiently. Partnering with Medpace as a full-service clinical research organization (CRO) can provide full-service capabilities for studies requiring bioanalytical analysis, central laboratories, and clinical pharmacology. All Medpace laboratories are centrally located, adjacent to Medpace Clinical Pharmacology Unit for maximum efficiency in conducting early phase clinical development projects.



MEDPACE

Small and Large Molecule Expertise

Leveraging state-of-the-art instrumentation, techniques, and facilities, Medpace's team of experts has experience in a broad range of small and large molecule bioanalytical and biomarker support. Medpace Bioanalytical Laboratories is a leading provider of bioanalytical services in all stages of drug development – from discovery to post-market

Small Molecule Capabilities

- PK assays
- Chromatographic separation of isobaric chiral molecules
- ICP-MS for metal-containing drugs
- Direct sampling headspace GC-MS for volatile drugs
- Biomarker panels (e.g. fatty acids, bile acids)
- Metabolite ID by HRMS

Large Molecule Capabilities

- PK assays – ELISA or MS based
- Anti-drug antibody (ADA) assays
- Neutralizing antibody (Nab) assays – cell based and ligand binding
- Antinuclear antibody (ANA) testing using EVOS FL cell counting system
- Real-time PCR (qPCR)
- Cell surface proteins by flow cytometry
- Multiplex immunoassay biomarker panels

Instrumentation and Equipment

- AB Sciex 6500 High Sensitivity QTRAP LC-MS/MS system
- AB Sciex 5600 High Resolution QTOF LC-MS/MS system
- Sciex QTRAP 5500 LC-MS/MS Systems (with SelexION-Ion Mobility)
- Sciex API-4000 LC-MS/MS Systems
- UFLC Shimadzu LFLC/HPLC LC-30XR Systems (19,000 PSI)
- HPLC Shimadzu UFLC / LC-20 Systems
- Shimadzu QP2010 GC-MS
- PerkinElmer ICP-MS NexION 300X for Metal Compounds
- Microplate Readers with Absorbance, Fluorescence, and Luminescence Detection
- MSD Sector Imager 2400 and QuickPlex SQ 120 (Multiplex)
- Eppendorf qPCR (Realplex)
- Attune NxT Acoustic Focusing Flow Cytometer
- EVOS FL Auto Fluorescence Microscope
- Automated Sample Preparation (e.g. TomTec Quadra 4SPE)
- Validated Watson (IQ/OQ/PQ, Software) Systems
- Complete Services for Labeling, Shipping and Storing Biological Samples

Medpace Bioanalytical Laboratories LLC
5365 Medpace Way Cincinnati, Ohio 45227 USA
Toll-free: +1.866.902.9125
Tel: +1.513.366.3260
Fax: +1.513.366.3261
E-mail: info.mbl@medpace.com

M E D P A C E

FOCUSED. TRUSTED. GLOBAL.

medpace.com | info@medpace.com

North America

Europe

Latin America

Asia

Africa

Middle East

Australia