

# MEDPACE

## INTEGRATED EFFICIENCY

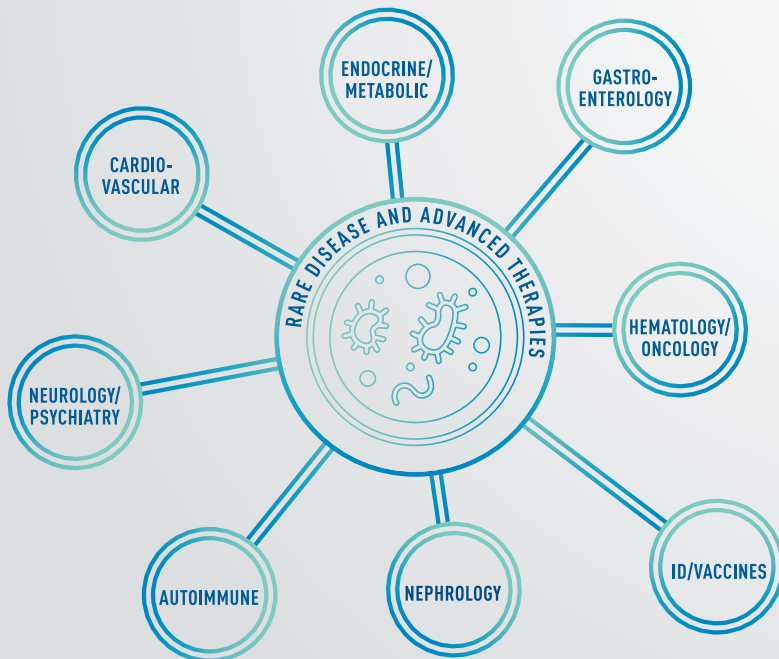
A MODEL OF COLLABORATION—  
AN END TO END PARTNER



- CENTRAL LABS
- BIOANALYTICAL LAB
- CORE LABS
- PHASE I UNIT

## THERAPEUTIC FOCUS

SCIENTIFIC EXPERTISE EMBEDDED  
IN TRIALS—HANDS-ON & SPECIALIZED



## ORGANIC GROWTH

STABLE AND DISCIPLINED—  
PRESERVING A CULTURE  
OF QUALITY



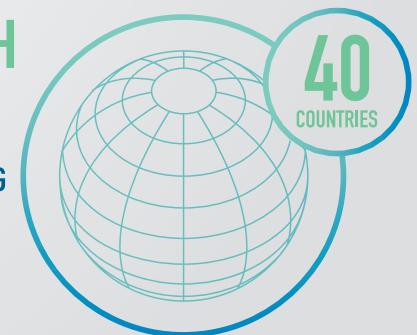
### WHAT'S THE DIFFERENCE?

### WHY IT MATTERS

- |   |   |
|---|---|
| 27 year history                         | Stability in leadership and deep institutional experience |
| Embedded physician leadership           | Therapeutic expertise through trial lifecycle             |
| Strategic regulatory affairs            | Early planning for long term success                      |
| Scientific reputation and relationships | Access to KOLs and sites                                  |
| One-of-a-kind research campus           | Built-in efficiency                                       |
| ClinTrak®                               | Technology for proactive study management                 |
| Budget management model                 | Operations focused on execution                           |
| Rigorous training program               | Consistent quality around the world                       |
| Office-based model                      | Facilitates collaboration and communication               |

## GLOBAL REACH

OPERATIONAL AROUND  
THE WORLD—WHEREVER  
RESEARCH IS HAPPENING



MAKING THE COMPLEX  
**SEAMLESS™**

---



MEDP**A**CE