



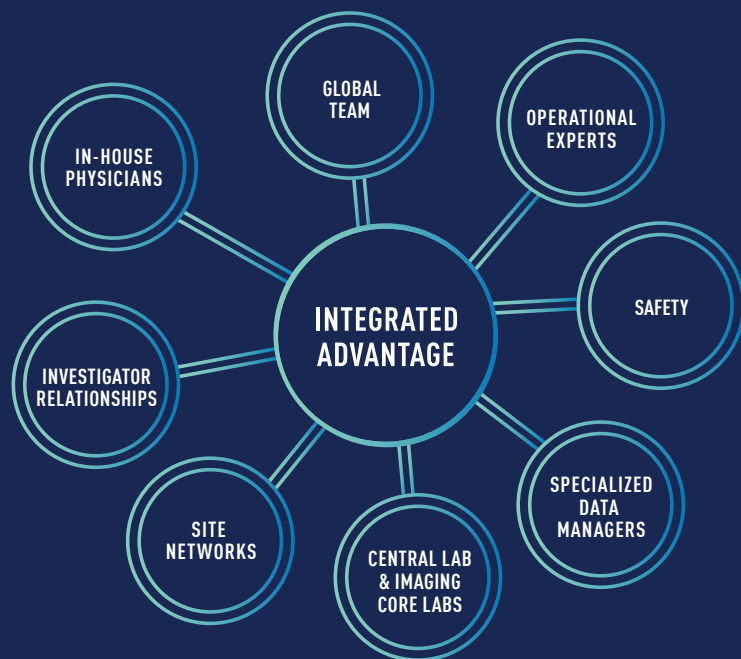
HEMATOLOGY & ONCOLOGY

A COMPETITIVE EDGE FOR CLINICAL DEVELOPMENT

GLOBAL CRO EXPERIENCE

Deep Expertise – Largest Area of Medpace Work

- A full-range of trial indications and therapeutic modalities
- Cutting-edge targeted therapies and advanced therapies
- Rare disease and orphan indications
- Adaptive and novel trial designs



RELATIONSHIPS AND RESOURCES

Worldwide, Solid Connections

- Database of Medpace experienced sites
- Investigator relationships in a full breadth of indications and therapeutic modalities
- Well-developed recruitment strategies
- Recognized cancer training program and certifications for clinical operations
- Track-record for developing successful strategies for even the most novel therapies
- Dedicated global regulatory submissions team and global regulatory affairs for comprehensive support
- Experienced trial managers and data managers to drive efficiency and quality

MEDPACE

IMAGING CORE LAB

Experienced in many modalities and measurement criterion for critical imaging endpoints

MODALITIES

- Computer Tomography (CT)
- Magnetic Resonance Imaging (MRI)
- Positron Emission Tomography (PET)
- Single-Photon Emission Computer Tomography (SPECT)
- Planar
- X-Ray
- Cardiac Safety/TQT

RESPONSE CRITERIA

- RECIST
- Cheson
- Choi
- PERCIST
- INRC
- Lugano
- RANO
- Dosimetry
- Pharmacokinetic

SAMPLE SPECIALTIES

- Pediatric and adult hematology/oncology
- Pediatric and adult hematopoietic stem cell transplantation
- Women's health and malignancies
- Regenerative medicine and cellular therapies
- Gene therapies
- Immunotherapies
- Radiotherapy
- Peptide Receptor Radiotherapy
- Cardio-Oncology
- Neuro-Oncology

MAKING THE COMPLEX
SEAMLESS

CENTRAL LAB

CAP Accredited Labs to Support Global Strategies

FLOW CYTOMETRY

- PhD led team
- Standard and customized panels
- Available in Medpace's US, Belgium, and Singapore Central Lab locations

GENOMIC AND MOLECULAR TESTING

- Next gen sequencing
- Sanger sequencing
- PCR and qPCR
- Viral shedding
- DNA and RNA extraction

HISTOLOGY AND ANATOMICAL PATHOLOGY

- H&E staining
- Special stains
- IHC
- FISH

SERUM AND PLASMA ONCOLOGY BIOMARKERS

- Alpha Fetoprotein
- CA125
- Carcinoembryonic antigen
- CK-18
- CK-18 M65 Epideath
- Fecal occult blood
- Fibroblast growth
- Factors (2, 21, 23)
- MIA (CD-RAP)
- Neuron specific enolase
- Prostate specific antigen
- S-100
- Vascular adhesion molecule (VCAM-1)
- Vascular endothelial growth factor (VEGF)
- VEGF-A
- VEGF-R2