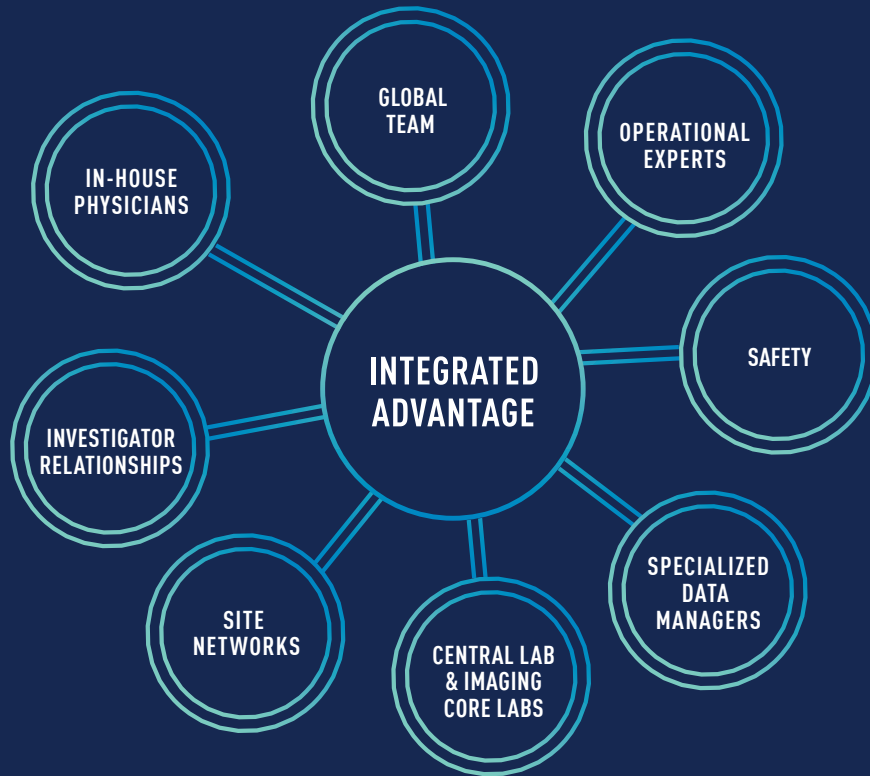


HEMATOLOGY & ONCOLOGY

A COMPETITIVE EDGE FOR CLINICAL DEVELOPMENT



EXPERIENCE

DEEP EXPERTISE – LARGEST AREA OF MEDPACE WORK

- A FULL-RANGE OF TRIAL INDICATIONS AND THERAPEUTIC MODALITIES
- CUTTING-EDGE TARGETED THERAPIES AND ADVANCED THERAPIES
- RARE DISEASE AND ORPHAN INDICATIONS
- ADAPTIVE AND NOVEL TRIAL DESIGNS

RELATIONSHIPS AND RESOURCES

WORLDWIDE, SOLID CONNECTIONS

- DATABASE OF MEDPACE EXPERIENCED SITES
- INVESTIGATOR RELATIONSHIPS IN A FULL-BREADTH OF INDICATIONS AND THERAPEUTIC MODALITIES
- WELL-DEVELOPED RECRUITMENT STRATEGIES
- RECOGNIZED CANCER TRAINING PROGRAM AND CERTIFICATIONS FOR CLINICAL OPERATIONS
- TRACK-RECORD FOR DEVELOPING SUCCESSFUL STRATEGIES FOR EVEN THE MOST NOVEL THERAPIES
- DEDICATED GLOBAL REGULATORY SUBMISSIONS TEAM AND GLOBAL REGULATORY AFFAIRS FOR COMPREHENSIVE SUPPORT
- EXPERIENCED TRIAL MANAGERS AND DATA MANAGERS TO DRIVE EFFICIENCY AND QUALITY

CENTRAL LAB

CAP ACCREDITED LABS TO SUPPORT GLOBAL STUDIES

- PK/PD
- BIOMARKERS
- FLOW CYTOMETRY
- MOLECULAR AND GENOMIC TESTING

IMAGING CORE LAB

EXPERIENCED IN MANY MODALITIES AND MEASUREMENT CRITERION FOR CRITICAL IMAGING ENDPOINTS

IMAGING CORE LAB

MODALITIES

- COMPUTED TOMOGRAPHY (CT)
- MAGNETIC RESONANCE IMAGING (MRI)
- POSITRON EMISSION TOMOGRAPHY (PET)
- SINGLE-PHOTON EMISSION COMPUTED TOMOGRAPHY (SPECT)
- X-RAY
- CARDIAC SAFETY/TQT

RESPONSE CRITERIA

- RECIST
- RECIL
- iRECIST
- LUGANO
- PERCIST
- DOSIMETRY
- RANO

SAMPLE SPECIALTIES

- PEDIATRIC HEMATOLOGY/ONCOLOGY
- PEDIATRIC AND ADULT HEMATOPOEITIC STEM CELL TRANSPLANTATION
- WOMEN'S HEALTH AND MALIGNANCIES
- REGENERATIVE MEDICINE AND CELLULAR THERAPIES
- IMMUNOTHERAPIES
- GENE THERAPIES
- CARDIO-ONCOLOGY

CENTRAL LAB

FLOW CYTOMETRY

- PHD LED TEAM
- STANDARD AND CUSTOMIZED PANELS
- AVAILABLE IN MEDPACE'S US, BELGIUM, CHINA, AND SINGAPORE CENTRAL LAB LOCATIONS

GENOMIC AND MOLECULAR TESTING

- NEXT GEN SEQUENCING
- SANGER SEQUENCING
- PCR AND QPCR
- VIRAL SHEDDING

ANATOMICAL PATHOLOGY

- PARTNERSHIPS THAT PROVIDE FULL BIOPSY PROCESSING CAPABILITIES
- IHC
- FISH

SERUM AND PLASMA ONCOLOGY BIOMARKERS

- ALPHA FETOPROTEIN
- CA125
- CARCINOEMBRYONIC ANTIGEN
- CK-18
- CK-18 M65 EPIDEATH
- FECAL OCCULT BLOOD
- FIBROBLAST GROWTH FACTORS (2, 21, 23)
- MIA (CD-RAP)
- NEURON SPECIFIC ENOLASE
- PROSTATE SPECIFIC ANTIGEN
- S-100
- VASCULAR ADHESION MOLECULE (VCAM-1)
- VASCULAR ENDOTHELIAL GROWTH FACTOR (VEGF)
- VEGF-A
- VEGF-R2