

MEDPACE

INTEGRATED EFFICIENCY

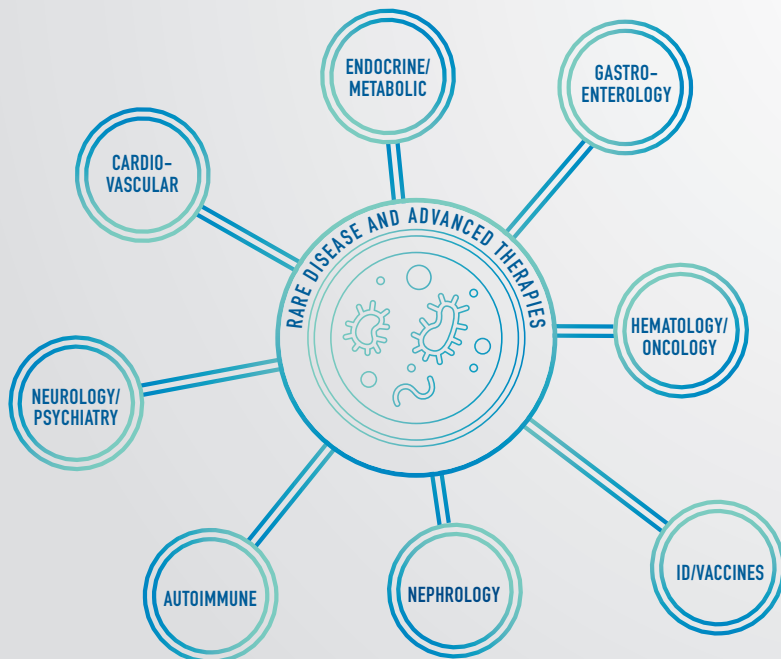
A MODEL OF COLLABORATION —
AN END TO END PARTNER



- CENTRAL LABS
- BIOANALYTICAL LAB
- CORE LABS
- PHASE I UNIT

THERAPEUTIC FOCUS

SCIENTIFIC EXPERTISE EMBEDDED
IN TRIALS — HANDS-ON & SPECIALIZED



ORGANIC GROWTH

STABLE AND DISCIPLINED —
PRESERVING A CULTURE
OF QUALITY

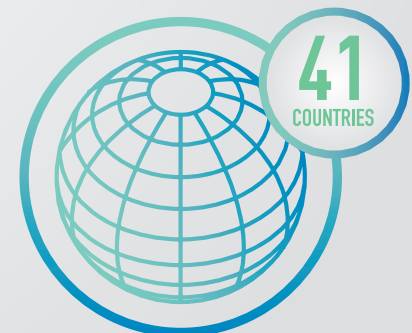


WHAT'S THE DIFFERENCE? WHY IT MATTERS

- 30 year history — Stability in leadership and deep institutional experience
- Embedded physician leadership — Therapeutic expertise through trial lifecycle
- Strategic regulatory affairs — Early planning for long term success
- Scientific reputation and relationships — Access to KOLs and sites
- One-of-a-kind research campus — Built-in efficiency
- ClinTrak® — Technology for proactive study management
- Budget management model — Operations focused on execution
- Rigorous training program — Consistent quality around the world
- Office-based model — Facilitates collaboration and communication

GLOBAL REACH

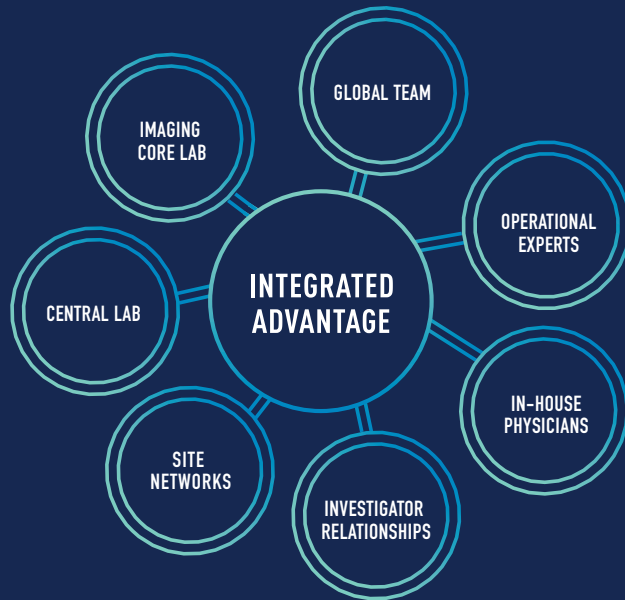
OPERATIONAL AROUND
THE WORLD — WHEREVER
RESEARCH IS HAPPENING





NEPHROLOGY & RENAL DISEASE

A COMPETITIVE EDGE FOR CLINICAL DEVELOPMENT



STRATEGIC EXECUTION

EXPERTISE IN CONDUCTING NEPHROLOGY STUDIES

- In-house physicians
- Operations teams
- Global regulatory trial managers and data managers

GLOBAL EXPERIENCE

60+
STUDIES

13,000
PATIENTS

3,500
SITES

INDICATIONS

- Renal insufficiency and failure
- Genetic or rare kidney diseases including vasculitis and enteric hyperoxaluria
- Glomerulonephritis such as GN associated with ANCA vasculitis, IgA nephropathy, membranous nephropathy, C3 glomerulonephritis and focal segmental glomerulosclerosis
- Bone & mineral metabolism (including hyperphosphatemia)
- Metabolic acidosis/alkalosis, electrolyte disorders
- Chronic kidney disease (CKD) and end stage renal disease (ESRD) including dialytic therapies
- Diabetic nephropathy
- Anemia

MEDPACE CORE LABS

EXTENSIVE TRIAL EXPERIENCE WITH COMPLEX SCIENCE

- Computed Tomography (ct) and Magnetic Resonance Imaging (MRI)
- Dual Energy X-Ray Absorptiometry (DXA)
- Ultrasound\Cardiac Echo
- ECG\Holter\ABPM

GLOBAL CENTRAL LABS

COMPREHENSIVE TESTING MENU FOR NEPHROLOGY

- Albumin (urine)
- Beta 2 microglobulin (blood/urine)
- Creatinine (urine)
- Cystatin C (urine)
- Electrophoresis, serum/urine
- Epidermal growth factor
- Immunofixation, serum/urine
- Kidney injury molecule-1
- N-Acetyl- β -D-Glucosaminidase, neutrophil
- Gelatinase-associated lipocalin (blood, urine)
- Osmolality (urine)
- Transforming growth factor, BETA 1 (urine)

MEDPACE