

MEDPACE

INTEGRATED EFFICIENCY

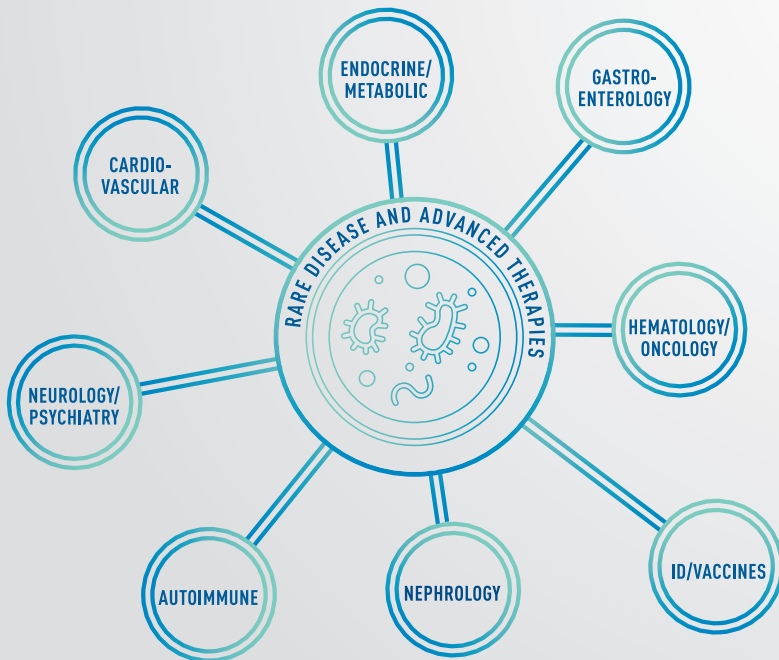
A MODEL OF COLLABORATION—
AN END TO END PARTNER



- CENTRAL LABS
- BIOANALYTICAL LAB
- CORE LABS
- PHASE I UNIT

THERAPEUTIC FOCUS

SCIENTIFIC EXPERTISE EMBEDDED
IN TRIALS—HANDS-ON & SPECIALIZED



ORGANIC GROWTH

STABLE AND DISCIPLINED—
PRESERVING A CULTURE
OF QUALITY



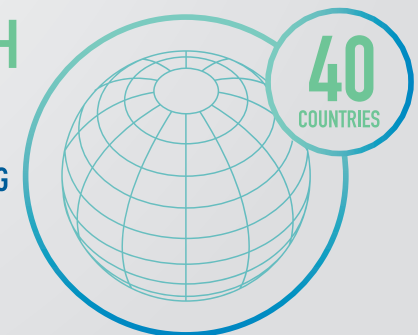
WHAT'S THE DIFFERENCE?

WHY IT MATTERS

- | | | |
|---|---|---|
| 27 year history | ○ | Stability in leadership and deep institutional experience |
| Embedded physician leadership | ○ | Therapeutic expertise through trial lifecycle |
| Strategic regulatory affairs | ○ | Early planning for long term success |
| Scientific reputation and relationships | ○ | Access to KOLs and sites |
| One-of-a-kind research campus | ○ | Built-in efficiency |
| ClinTrak® | ○ | Technology for proactive study management |
| Budget management model | ○ | Operations focused on execution |
| Rigorous training program | ○ | Consistent quality around the world |
| Office-based model | ○ | Facilitates collaboration and communication |

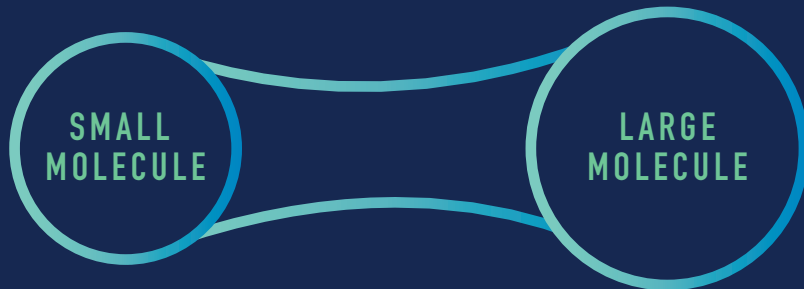
GLOBAL REACH

OPERATIONAL AROUND
THE WORLD—WHEREVER
RESEARCH IS HAPPENING



BIOANALYTICAL LABS

PROVIDING ACCURATE, HIGH-QUALITY RESULTS IN A TIMELY, SECURE, AND COST-EFFECTIVE MANNER



- PK ASSAYS
- CHIRAL MOLECULES
- ICP-MS
- GC-MS
- METABOLITE ID
- BIOMARKERS

- PK ASSAYS
- ADA ASSAYS
- NAB ASSAYS
- ANA ASSAYS
- PCR ASSAYS
- FLOW CYTOMETRY
- BIOMARKERS

- METHOD DEVELOPMENT, FEASIBILITY, AND VALIDATION
- PRE-CLINICAL AND CLINICAL SAMPLE ANALYSIS
- ANALYTICAL SUPPORT FOR
 - CLINICAL PK AND ADA STUDIES
 - NON-CLINICAL TK STUDIES
 - BIOEQUIVALENCE, BIOAVAILABILITY, DOSE ESCALATING STUDIES
- PHARMACODYNAMICS / BIOMARKER STUDIES

MEDPACE LABS STAND OUT

EXPERIENCED AND HIGHLY-TRAINED SCIENTISTS
SUPPORTED BY EXPERT STAFF

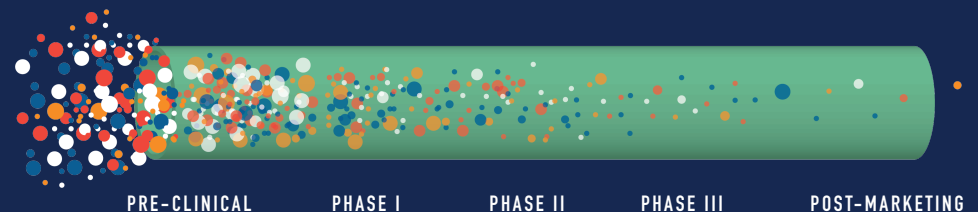
WHAT'S THE DIFFERENCE?

ADVANTAGE

- | | | | |
|---|---|---|--|
| Experience with small and large molecule biomarkers | ○ | ○ | Diverse experience to expedite research |
| Expert leaders with years of experience | ○ | ○ | Anticipates problems and prepares solutions |
| Fully-integrated with Medpace CRO | ○ | ○ | Delivers efficient and streamlined execution with high quality results |
| Good Laboratory Practice (GLP) compliant | ○ | ○ | Ensures the highest quality testing and results |
| State-of-the-art equipment and instrumentation | ○ | ○ | Advanced knowledge of necessary instruments |
| Quality assurance present on site | ○ | ○ | Streamlines communication of all data |
| Local storage units with large capacity | ○ | ○ | Stores all study samples in one centralized location |

MULTI-PHASE SUPPORT

A PARTNER THROUGHOUT DRUG DEVELOPMENT



MEDPACE